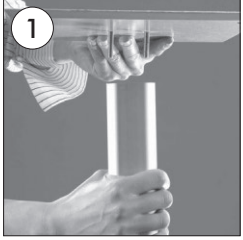
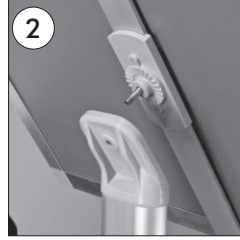
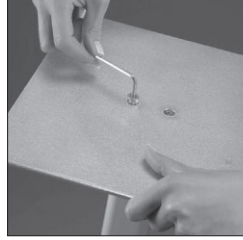


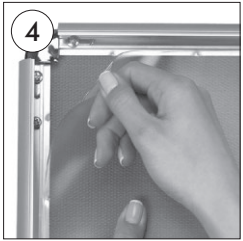
# CLASSICAL MENUBOARD



- Complete the stand by screwing the classical base to the elips profile.
- Die Fussplatte mit dem Elypsprofil anhand der Schrauben verbinden
- Ayağı elips profile vidalayarak sabitleyin.



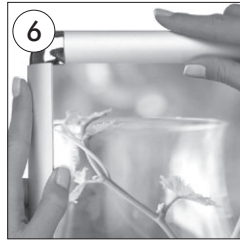
- Place the screw on the back of frame into hole on the pole. Screw the nut to fix the unit.
- Verbinden Sie anhand der Plastikmutter den Drehmechanismus auf der Rueckseite des Rahmens mit dem Gegenstueck am Elypsprofil .
- Ürün arkasındaki vidayı ayak üzerindeki yuvaya yerleştirin. Somunu vidaya takarak sıkın ve ürünü ayağa sabitleyin.



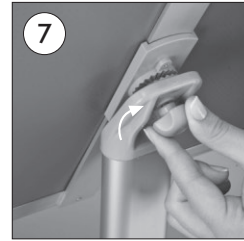
- Take-off the anti-reflex cover.
- Antireflex -Schutzfolie abheben.
- Anti-reflex korumayı kaldırın.



- Place the poster in.
- Poster einlegen.
- Posteri yerleştirin.



- After placing the cover back on the poster, close the profiles.
- Antireflex Schutzfolie auf Poster legen und die Seitenprofile zuklappen.
- Anti-reflex korumayı posterin üzerine yerleştirerek kenar profilleri kapatın.

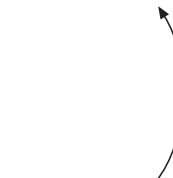
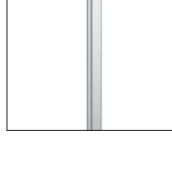
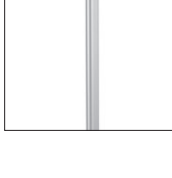
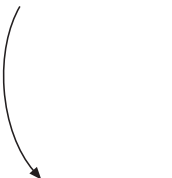


- Loose or tight the nut on the back of the frame in the direction of arrows. When loose, frame can be placed either portrait or landscape. Then tighten the nut to fix the frame position. The frame is made fixed when it is taken into the closed position.
- Indem Sie die Plastikmutter in Pfeilrichtung drehen loesen Sie das System, somit kann der Rahmen in Hochformat oder Querformat gedreht werden und durch festziehen der Plastikmutter in der Position fixiert werden.
- Çerçeve arkasındaki somunu şekildeki gibi ok yönlerine döndürerek sistemi açık yada kapalı konuma getirin. Açık konumdayken çerçeveyi hem yatay hemde dikey pozisyona getirebilirsiniz. Kapalı konuma getirdiğinizde çerçeveniz sabitlenir.



Portrait  
Hochformat  
Dikey

Landscape  
Querformat  
Yatay



- Please inform the order number on the product or on the carton (e.g. 1/110001394-460) to the place that you have made the purchase if any problem with the product occurs.
- Bitte teilen Sie bei jeglichen Problemen, die auf dem Artikel oder auf der Verpackung aufgeführte Auftragsnummer (z.B: 1/110001394-460) Ihrem Händler mit.
- Lütfen üründeki herhangi bir sorun için ürünün veya paketin üzerindeki sipariş numarasını (örnek: 1/110001394-460) satın aldığınız yere bildirin.

- All rights reserved. All pictures, figures and writings are secured internationally by copy-right law. Infringements will be sued by civil and legal law.
- Alle Rechte vorbehalten. Alle Bilder, Zeichnungen und Texte sind international urheberrechtlich geschützt. Etwasge Zuwiderhandlungen werden zivil-und strafrechtlich verfolgt.
- Tüm hakları saklıdır. Tüm resimlerin, şemaların ve yazıların kopya hakları uluslararası kanunlarla güvence altına alınmıştır. İhlali durumunda sivil ve hukuki yasa mercii tarafından dava edilecektir.



1007025