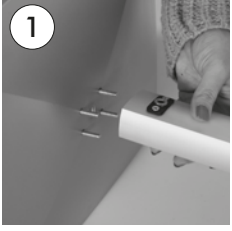
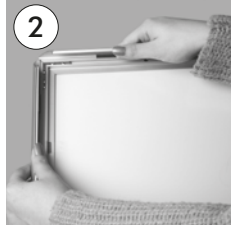


FLEXIBLE MENUBOARD WITH LEDBOX



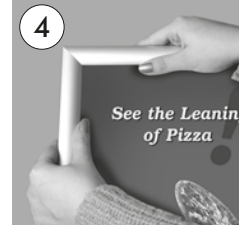
- Complete the stand by screwing the classical base to the convex profile.
- Schrauben Sie den klassischen Fuss an das Convexprofil fest.
- Ayağı convex profile vidalayarak sabitleyin.



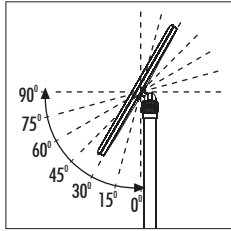
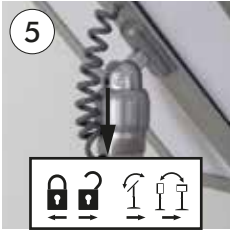
- Open all profiles.
- Alle Profile in der Pfeilrichtung öffnen.
- Kenar profilleri açın.



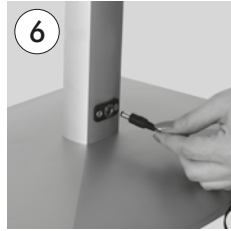
- Take-off the anti-reflex cover. Place the poster in.
- Antireflex -Schutzfolie abheben. Poster einlegen.
- Anti-reflex korumayı kaldırın. Posteri yerleştirin.



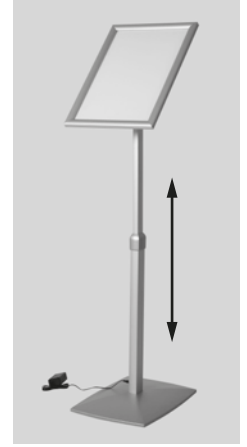
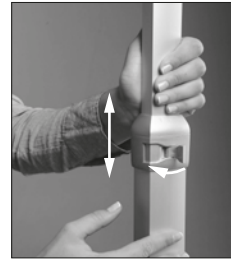
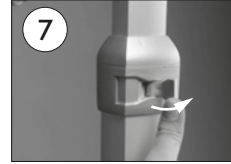
- After placing the cover back on the poster, close the profiles.
- Antireflex-Schutzfolie auf Poster legen und die Seitenprofile in Pfeilrichtung zuklappen.
- Anti-reflex korumayı posterin üzerine yerleştirerek kenar profilleri kapatın.



- Take the system into the opened or closed position by turning the nut at the back of the frame in the direction of arrows as in the figure. In the opened position, you can take the frame system both into the portrait or into the landscape position with a 15 degrees of angle gap. The frame is made fixed when it is taken into the closed position.
- Die Mutter drehend in die Pfeilrichtung können Sie das System entweder freimachen oder schliessen. Im freien Zustand kann der Rahmen je 150 Winkelfixierung vertikal oder horizontal bewegend in die gewünschte Position gebracht werden. Im Falle des Schliessens wird der Rahmen in dieser Lage befestigt sein.
- Çerçeve arkasındaki somunu şekildedeki gibi ok yönlerine döndürerek sistemi açık yada kapalı konuma getirin. Açık konumdayken çerçeveyi 15'er derecelik açı aralığı ile hem yatay hemde dikey pozisyona getirebilirsiniz. Kapalı konuma getirdiğinizde çerçeveniz sabitlenir.



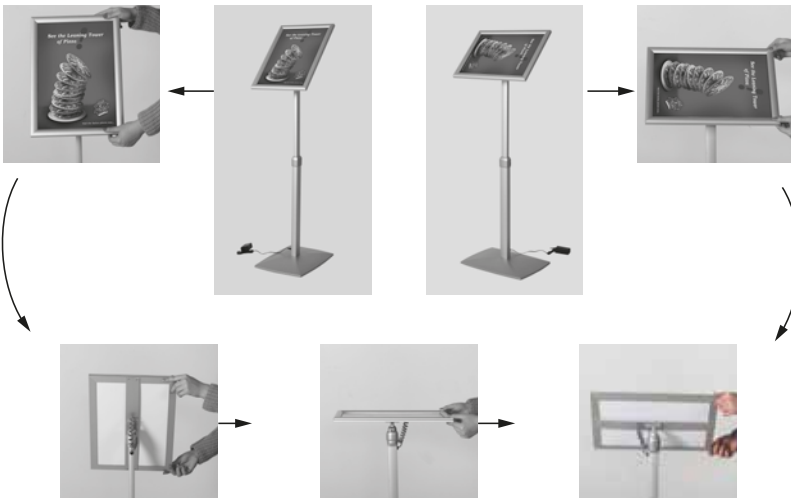
- Please plug in power cable on jack which is on the back of convex profile.
- Stecken Sie das Ende des Adapters in das dazugehörige Einsteckloch am Convex Profil.
- Convex profil üzerindeki Jack'a enerji kablosunu takın.



- Adjust the height of the menuboard by opening or closing the fastener on the leg as in the figure.
- Die Höhe des Ständers können Sie einstellen, indem Sie die Klemme am Standrohr wie die Pfeilrichtungen an der Abbildung auf-und zumachend bewegen.
- Boru üzerindeki mandalı şekildedeki gibi ok yönünde açıp kapayarak Menuboard'un yüksekliğini ayarlayın.

Portrait
Hochformat
Dikey

Landscape
Querformat
Yatay



- Please inform the order number on the product or on the carton (e.g. 1/110001394-460) to the place that you have made the purchase if any problem with the product occurs.
- Bitte teilen Sie bei jeglichen Problemen, die auf dem Artikel oder auf der Verpackung aufgeführte Auftragsnummer (z.B: 1/110001394-460) Ihrem Händler mit.
- Lütfen üstündeki herhangi bir sorun için ürünün veya paketin üzerindeki sipariş numarasını (örnek: 1/110001394-460) satın aldığınız yere bildiriniz.

- All rights reserved. All pictures, figures and writings are secured internationally by copy-right law. Infringements will be sued by civil and legal law.
- Alle Rechte vorbehalten. Alle Bilder, Zeichnungen und Texte sind international urheberrechtlich geschützt. Etwaige Zuwiderhandlungen werden zivil-und strafrechtlich verfolgt.
- Tüm hakları saklıdır. Tüm resimlerin, şemaların ve yazıların kopya hakları uluslararası kanunlarla güvence altına alınmıştır. İhlali durumunda sivil ve hukuki yasa mercii tarafından dava edilecektir.



1005992